



FORESTRY EDUCATION TO INFORM THE COMMUNITY AND EMPOWER OUR SECTOR



WHAT WE'VE BEEN UP TO IN 2025

WHO WE ARE AND WHAT WE DO

OUR GOALS



IN 2026 WE WILL:

1

Reach more students through our programmes



2

Strengthen pathways from education to employment



3

Grow our network of sector ambassadors



4

Develop new digital and classroom resources



5

Keep the sector visible at key community events



Kia ORa...



ERICA KINDER
DISCOVER FORESTRY CEO

From school halls to skid sites, we brought forestry to life for more than 10,000 students across the country this year. It was a year of real connection between schools, industry, and communities, and a huge thanks to all our forestry friends for volunteering their time, resources, equipment, and worksites.

Through Discover Forestry, we were able to:

- Bring forestry field trips and presentations to more schools
- Answer real questions from tamariki and rangatahi about the sector during careers events and in class
- Show that forestry is an essential industry in New Zealand and our 3rd-biggest primary sector
- Challenge old perceptions by showing young people, teachers, whānau, and community that forestry is about innovation, sustainability, and people.

This magazine is an opportunity to recap, celebrate, and invite support for the year ahead. If we want to have more school visits, more bus trips, and more young people seeing themselves in this sector, we need to keep showcasing our workplaces along with the enthusiastic and passionate employees who work here. And let's face it, we just love trees.

Both primary and secondary school students have benefited from meeting our forestry members and learning about forestry practices, log cartage, safety on the roads, and the new ways harvesting is conducted. We continue to try new things and explore new ideas while covering all the basics of our industry.

Thank you to every one of our supporters in 2025 — from the crews who shared their stories to the schools that welcomed us in and the companies and funders who backed our programmes. Your time, energy, and belief in Discover Forestry have helped thousands of young people see the wide range of opportunities in our sector.

See you all next year!

Erica Kinder
CEO, Discover Forestry



FORESTRY EDUCATION IN ACTION

Here's What We Do...



WOOD IS GOOD (PRIMARY SCHOOLS)

Forestry comes to life in the schoolyard through hands-on lessons and visits from local forestry crews and transport companies.

Tamariki discover how forests grow, how timber is used, and why trees matter to Aotearoa.



SECONDARY SCHOOLS BUS TRIPS

Secondary students visit real forestry, transport and processing sites – seeing how forests are planted, harvested and turned into products.

These experiences link classroom learning to careers and show the breadth of roles in the sector.



CAREERS EXPOS

We attend many regional and national careers expos to highlight forestry's scale, innovation and opportunity.

Students and teachers meet professionals from across the sector and explore training pathways.



CONNECTIONS & OUTREACH

We're out where people are – coordinating forestry's presence at the Fieldays® Forestry Hub, delivering school presentations, running forestry modules at Clash of the Colleges, and attending community events across Aotearoa. Every appearance helps grow understanding and pride in the industry.



WĀHINE IN FORESTRY

Wāhine in forestry is a dynamic and inclusive collective dedicated to supporting women in the forestry sector of New Zealand.

We are a growing community of wāhine who come together to exchange personal and professional insights, learn from experts, network, provide support, and celebrate our contribution to the industry.



RESOURCES FOR SCHOOLS

From Fred the Forester books and classroom activity packs, to our developing minecraft online activities, Discover Forestry provides practical resources that make learning about forestry accessible, engaging, and locally relevant.



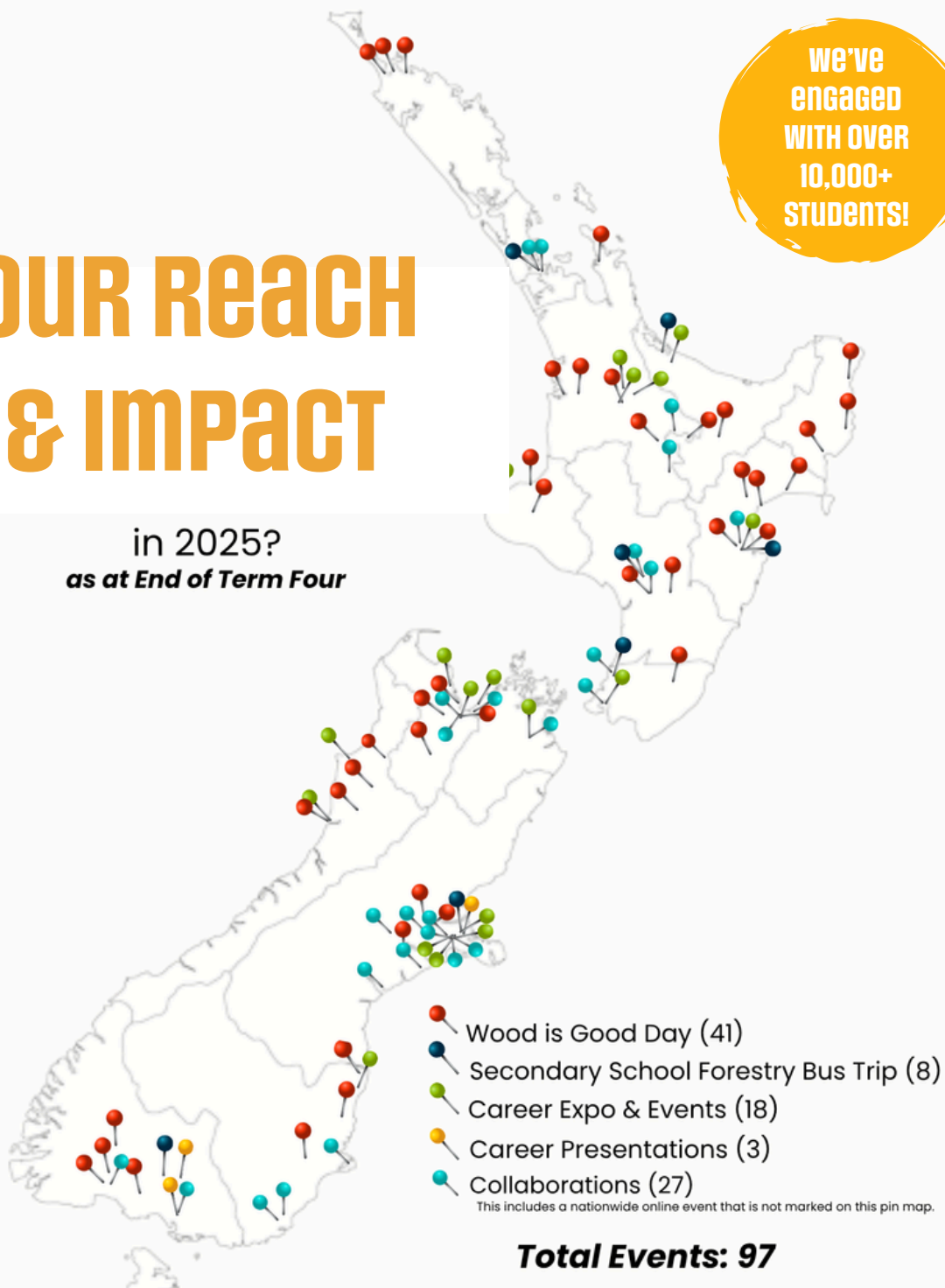


**DISCOVER
FORESTRY
NEW ZEALAND**

OUR REACH & IMPACT

in 2025?
as at End of Term Four

**we've
engaged
WITH OVER
10,000+
STUDENTS!**



discoverforestry.co.nz



Discover Forestry



Discover_forestry

HERE'S WHAT THEY SAID...



"It's a good opportunity to influence people's mindsets about forestry — especially teachers. We've definitely changed a few over the years. The letters we've had from students after visits show how much it stuck with them."

Kendra Monteith, Logic FSL



"Wow, what a fantastic couple of days! I love how forestry has been incorporated — it gives the children a chance to see what's actually involved in our industry. It's not just about cutting down trees."

Leesa Haimona, Timberlands



"I was a university lecturer in physics and engineering, and not once did I consider the huge STEM applications of the forestry industry. When you showcased drones, lidar, hydrology and biodiversity management, you lit a fire in me! I'd love to bring the science and engineering of forestry into our curriculum."

Dr Andy Ross, Science Teacher, Waiau Area School



"We had the most amazing time — the tamariki were raving about it today! Even our Kahu Kiwi pre-school whānau loved it. Thank you all so much for coming and sharing with our tamariki."

Dannielle Thomson, Principal, Awanui School





"One long-term impact of this programme is finding myself in the industry as a result of Erica's work. Talking to her and receiving information about forestry put it on my radar — I swapped to a forestry degree and now have a career and lifestyle I love."

Mia Gordon, Matariki Forests



"Thank you so much! You've inspired many of our intermediate students to work in forestry or become truck drivers. Such a cool experience for them all — we'd love to have you back again in the future."

Rachael Darlington, Leader of Learning & Well-Being, Taipa Area School



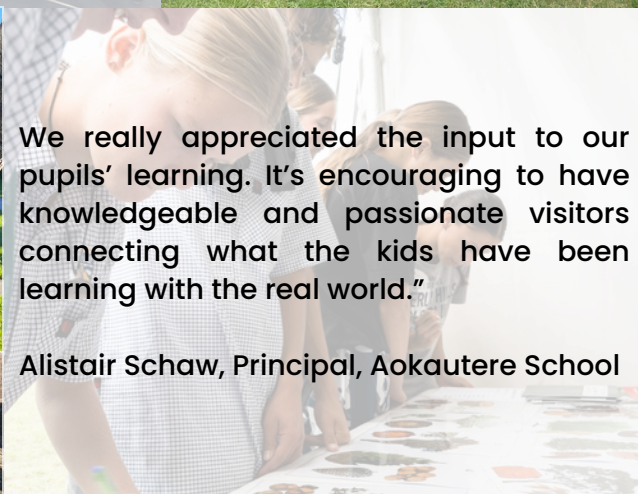
"The feedback I've received has been incredibly positive. I was surprised by the scale of the team — a great mix of industry knowledge, experience and personalities."

Graeme C. Taylor, Principal, Broadlands School



We really appreciated the input to our pupils' learning. It's encouraging to have knowledgeable and passionate visitors connecting what the kids have been learning with the real world."

Alistair Schaw, Principal, Aokautere School



SOME OF OUR FORESTRY FRIENDS

Our industry reps are the people who make forestry real for students. They bring their stories, skills, and experience to show tamariki and rangatahi the people and pathways behind our sector. There are so many more of you but we couldn't fit you all on the page!



Jeremy Thomson
NZ Farm Forestry Association



Boston Walker
McNeil Distribution



Chris Brand & Phil Caulton (Southern Forests) & Craig Unahi (Qube)



Mia Gordon
Matariki Forests



Travis Terry and Rob Hayes
West Coast Forests



Wayne Dodgens and Josh Wyatt
Forest Management NZ LTD



Kiana Sayer-White
SMH Logging



Dom Cleary
Forest Management Group



Vaughn Warner
Timberlands Limited



Monique Noble
Kuru Contracting Ltd



Kim Speedy
John Turkington Forestry



Justin Adams
T. Croft Transport



Karen Lucich
Summit Forests New Zealand



James Power
Tasman Pine Forests



Rob Angus
Waipa Forest Management



Cass Hetherington & Jack Burgess from Port Blakely

We are grateful to the companies and professionals who contributed their time, resources, and expertise. Your commitment strengthens forestry education and helps grow the visibility of our sector nationwide.

Aspect Forestry & Contracting
Aratu Forests
Borlase Transport
C3
Clash of the Colleges
Competenz
Dynes Transport
Ernslaw One
FMNZ (Forest Management NZ)
Forest Management Group
Forest 360
Forest Enterprises
ForestryCo
Forever Forests
Foxpine Haulage Ltd
Future Foresters
GJ Soles
Greening Taupō
Hamish & Glenis Levack – NZ Farm
Forestry Association
Harvest Logistics
Hartley Contracting Ltd

HATA (Horticulture & Ag Teachers Association)
JNL (Juken New Zealand Ltd)
John Turkington Forestry
Kids n Rigs
Kings Log Transport
KJS Logtranz Ltd
Kuru Contracting
Laurie Forestry
Logic Forest Solutions
Log Marketing
Mangoihe Logging
Manulife
Mary Kinder
Mark Pittar Transport
Matariki Forests
McCarthy Transport
McIndoe Logging Ltd
McNeill Distribution
Ministry for Primary Industries
Nāti Growth
NZ Farm Forestry Association

NZFM (New Zealand Forest Managers)
Pan Pac
PF Olsen
Philip Wareing Ltd
Port Blakely
Qube
RFH (Rotorua Forest Haulage)
R.G. Lord
Self Loader Logging
SP (Shane Pickens) Log Haulage
Sheldrake Haulage
Southern Forests
Speirs Logging
Stuart Drummond Transport
Summit Forests
T Croft Transport
Tasman Pine Forests
Timberlands
Trevor Masters Logging
University of Canterbury – School of Forestry
Waipā Forest Management
West Coast Forests



GET INVOLVED!

Discover Forestry works best when we do it together. Here's how you can be part of it.

YOU can:

- **Be an ambassador and give your time.** Share your story and represent the sector at Wood is Good days, community & careers events, or on secondary school trips.
- **Host students** on site. Let them see forestry, transport, or processing in action.
- **Provide gear or equipment.** Make events hands-on and engaging.
- **Sponsor or fund** resources, prizes, or regional programmes.
- **Sign up** to our newsletter and **follow us** on Facebook and Instagram!

READY TO GET INVOLVED?

EMAIL US AT DISCOVER@DISCOVERFORESTRY.CO.NZ

2025 HIGHLIGHTS

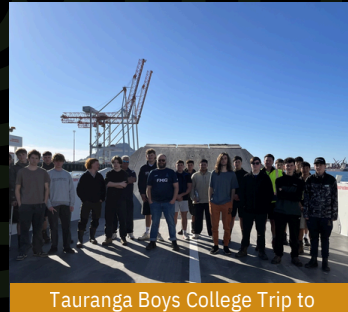
A year of growth, reach, and real impact!



Ashburton Clash of the Colleges



Wood is Good Day at Mohaka School



Tauranga Boys College Trip to
Matakana Island



South Island Field Days



Kids' N Rigs Truck Show in Nelson



Celebrating the 2025 School of Forestry
Wāhine Graduates



Frasertown School
Wood is Good Day



Fielding Ag Bus Trip with Forest Enterprises



Mystery Creek Field Days



Taranaki Careers Expo



Otago Southland Clash of the Colleges



Te Puke High School's STEM
Careers Expo



Southland Wāhine in Forestry Networking Event



Aokautere School Wood is Good Day with the Foxpine crew

Wāhine in Forestry

We're a growing community of wāhine across the forestry sector, coming together to learn, share experiences, support each other, and celebrate the work we do.



WĀHINE IN FORESTRY CONFERENCE 2026

VENUE: SPENCER BEACH SURF CLUB

ACCOMMODATION: SPENCER BEACH TOP 10 HOLIDAY PARK

CHRISTCHURCH



WHERE WE STAND

20%

of NZ's forestry
workforce are
women.

10%

in logging.
The toughest gap
to close!

8-9k

Wāhine in
Forestry
(out of 42,000 total)

CONNECT WITH US

-  Wahine in Forestry
-  wahine_in_forestry
-  www.wahineinforesstry.co.nz
-  wahine@wahineinforesstry.co.nz
-  Sign up to our newsletter on our website

The Wāhine in Forestry Conference is New Zealand's premier national event dedicated to educating & empowering women in the forestry sector.

- Just 20 minutes from Christchurch Airport
- Conference venue: Spencer Beach Surf Club
- Accommodation: Spencer Beach Top 10 Holiday Park
- Location offers an ideal setting for professional development and team-building

Programme highlights:

- **Interactive Workshops** - Build leadership, sharpen strategy, solve real sector challenges.
- **Networking Sessions** - Connect with peers and industry leaders - including forestry students joining at no cost.
- **Mentorship Opportunities** - Form lasting professional relationships and gain career guidance.

To register email

wahine@wahineinforesstry.co.nz

Visit our website for more information



WE ARE RARE, WE ARE BRAVE!

Discover Forestry is powered by the generosity of our sector. Ngā mihi nui to our major supporters. Email us for more information at discover@discoverforestry.co.nz.



WIDE TRUST

The Wood Industry Development and Education (WIDE) Trust is a charitable trust established in 2018 with the mission to support development and education in the forestry and wood industry sectors through the provision of grants and scholarships to New Zealand students and institutions.



FOREST GROWERS LEVY TRUST (FGLT)

The Forest Growers' Levy Trust collects the commodity levy paid on harvested wood material from forest growers and acts as the custodian of those funds. The Trust ensures the levy is invested in research, development, biosecurity, promotion and other industry-good activities that benefit New Zealand's plantation forest sector.



CANTERBURY WEST COAST WOOD COUNCIL (CWCWC)

The Canterbury West Coast Wood Council represents the forestry and wood products industry across the region. It brings together members from growing to processing, promoting collaboration, sustainability, and regional growth in the sector.



SOUTHERN NORTH ISLAND WOOD COUNCIL (SNIWC)

The Southern North Island Wood Council promotes growth, education, and collaboration across the forestry and wood-processing sectors. It represents the lower North Island, spanning Taranaki, Whanganui, Manawatū, Wellington, and the Wairarapa.